



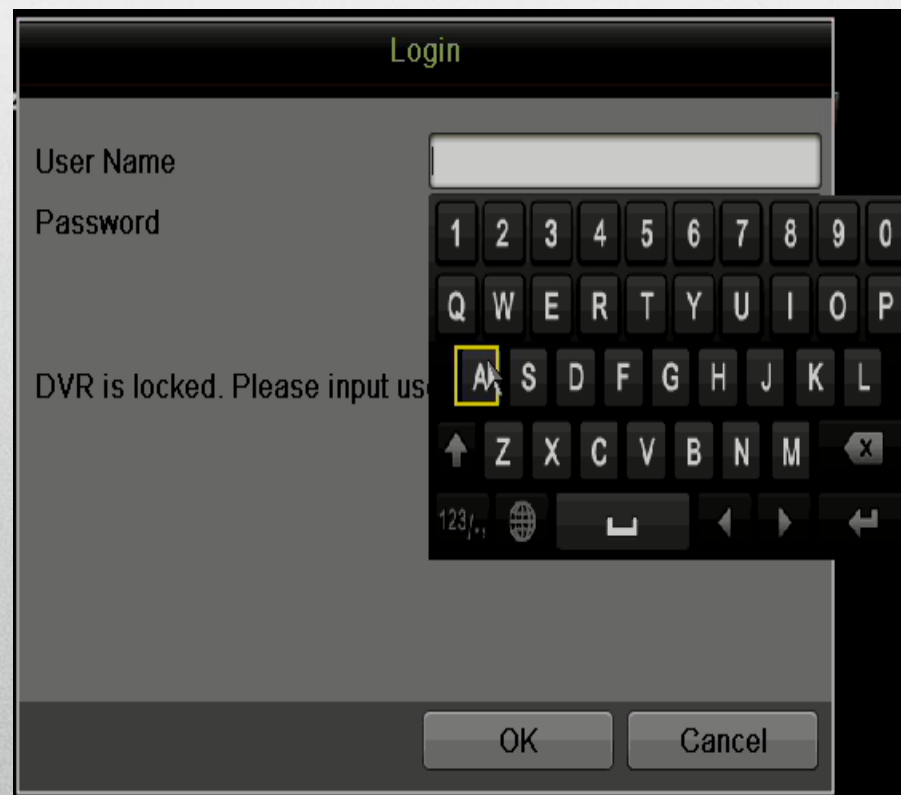
HIKVISION[®]

2016

How to Use the On-Screen Keyboard

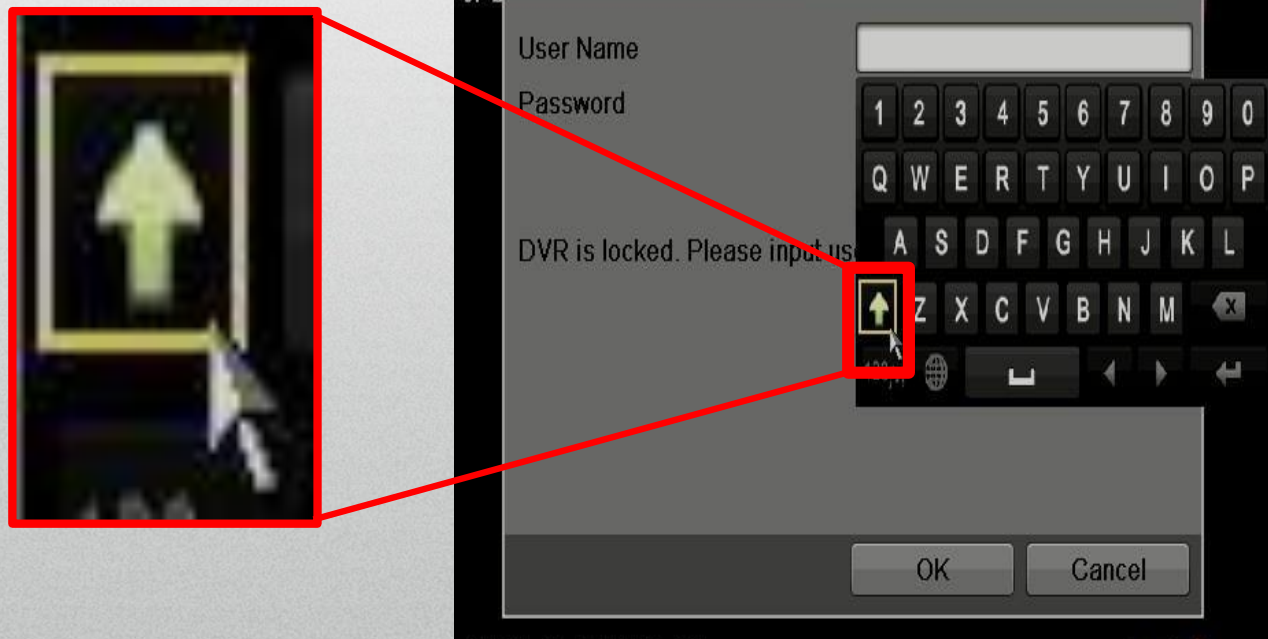
Using the On-ScreenKeyboard

- The onscreen keyboard is by default lowercase.
- Clicking in any input field will bring up the default keyboard.



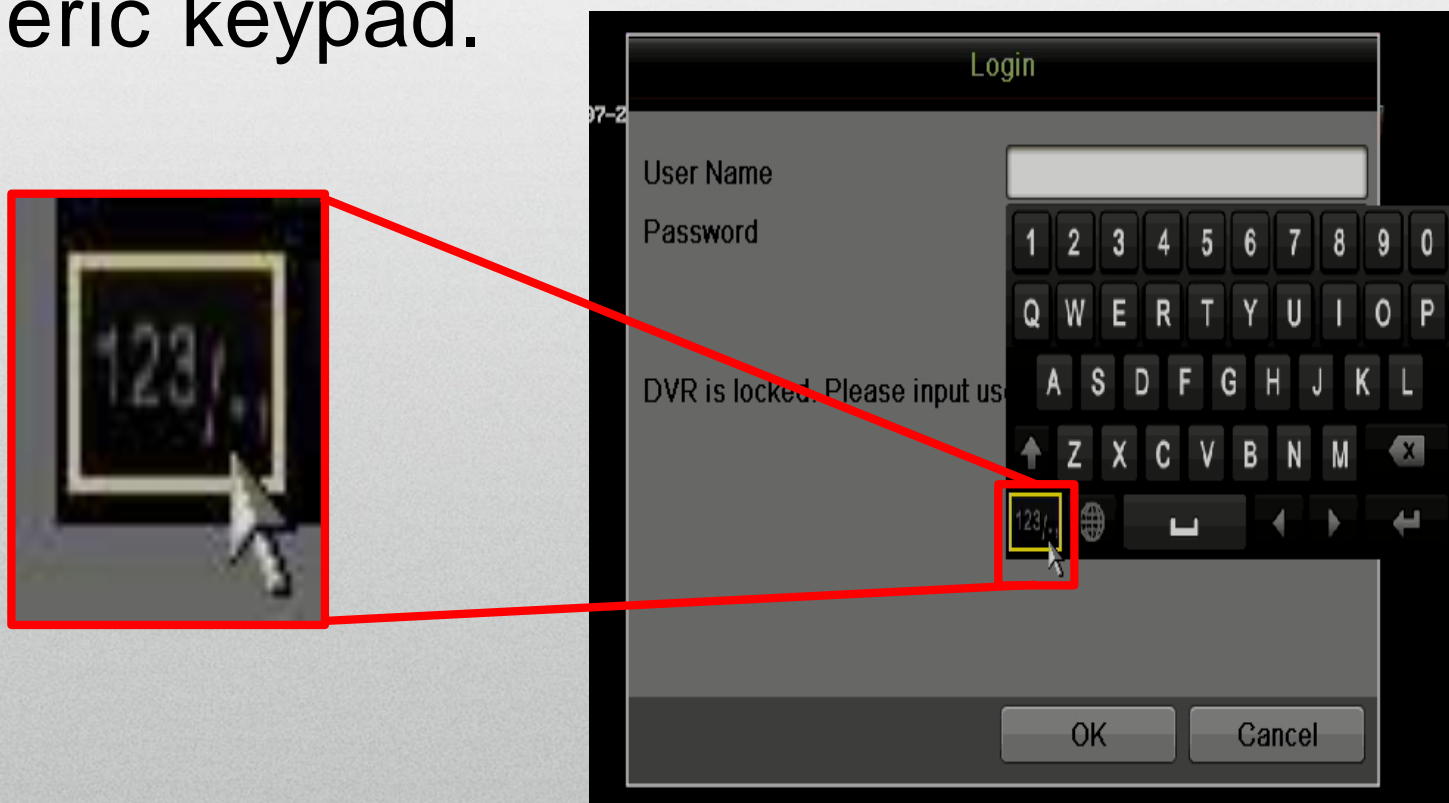
Using the On-ScreenKeyboard

- Click the up arrow to shift to capital letters.



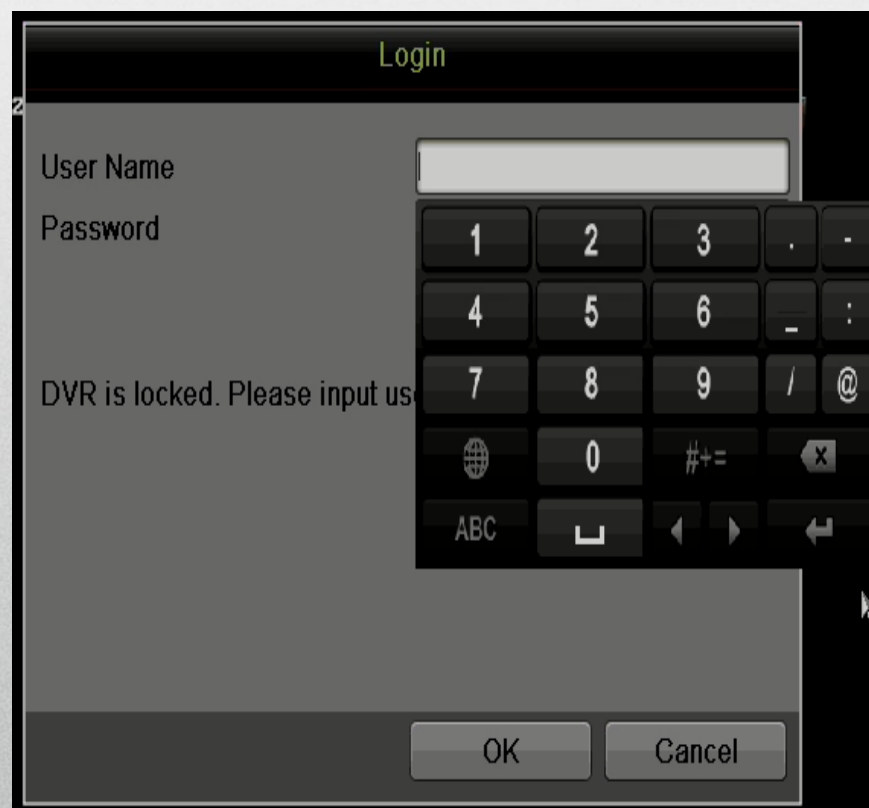
Using the On-ScreenKeyboard

- Click the 123/.,; button to change to numeric keypad.



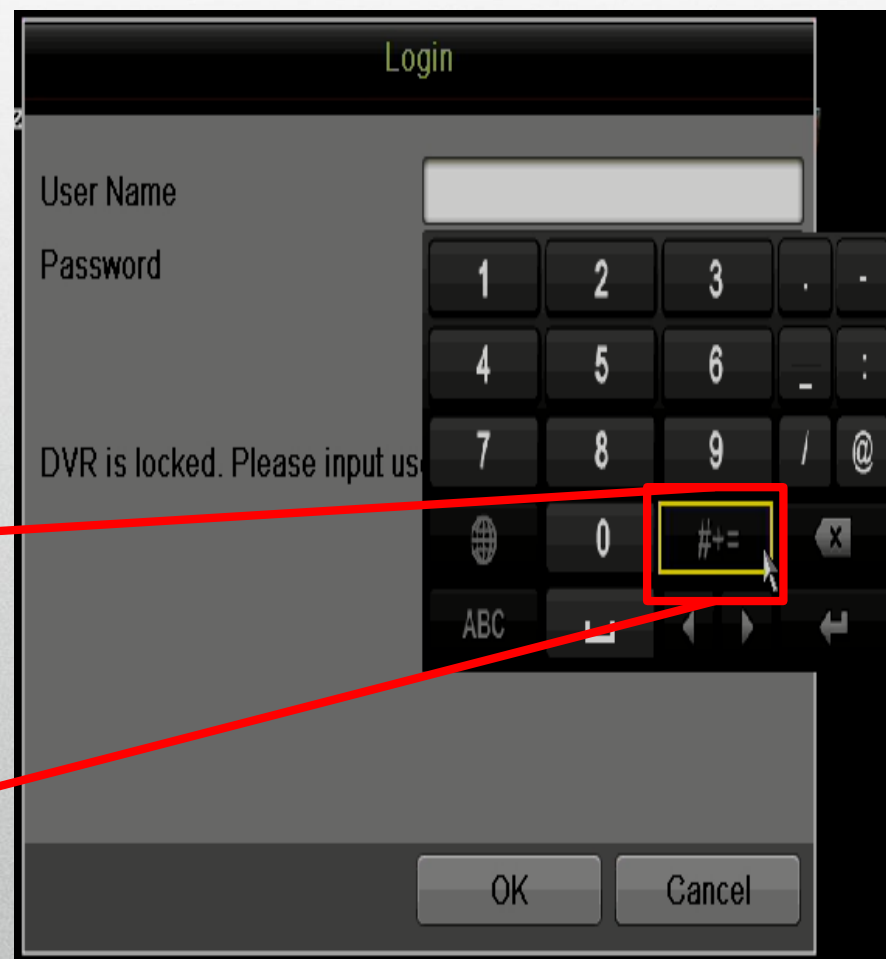
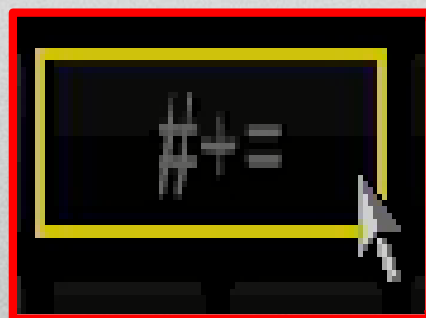
Using the On-ScreenKeyboard

- The result after click the 123/., box will be a keypad.



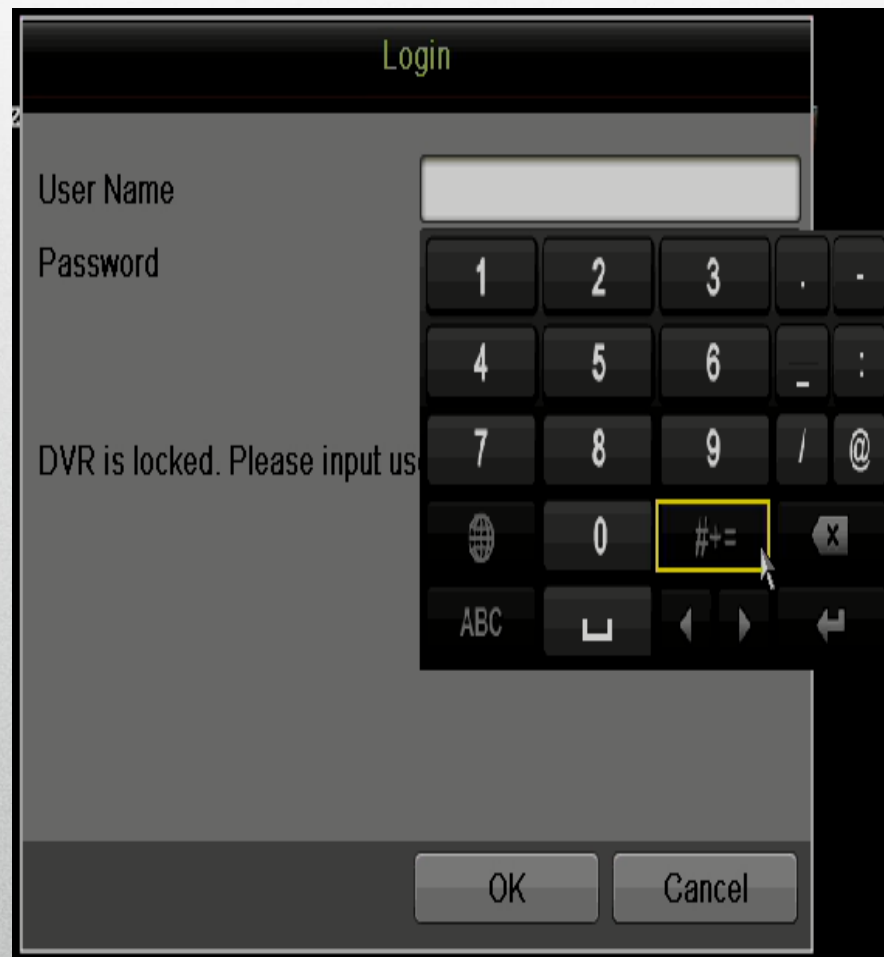
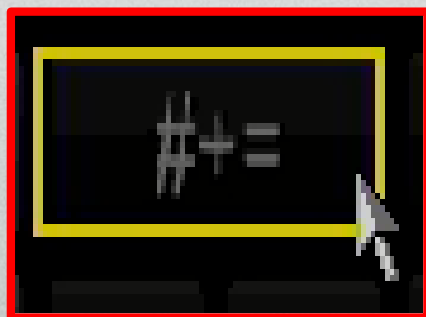
Using the On-ScreenKeyboard

- Click on the #+= button for more special characters



Using the On-ScreenKeyboard

- The result after click the #+= box will be a special character keyboard.



Note: The special character keyboard is only available from the keypad.