

DS-K2600 Interlock Configuration

1. Operation Process

- 1) What is Interlock function
- 2) Interlock configuration
- 3) Test

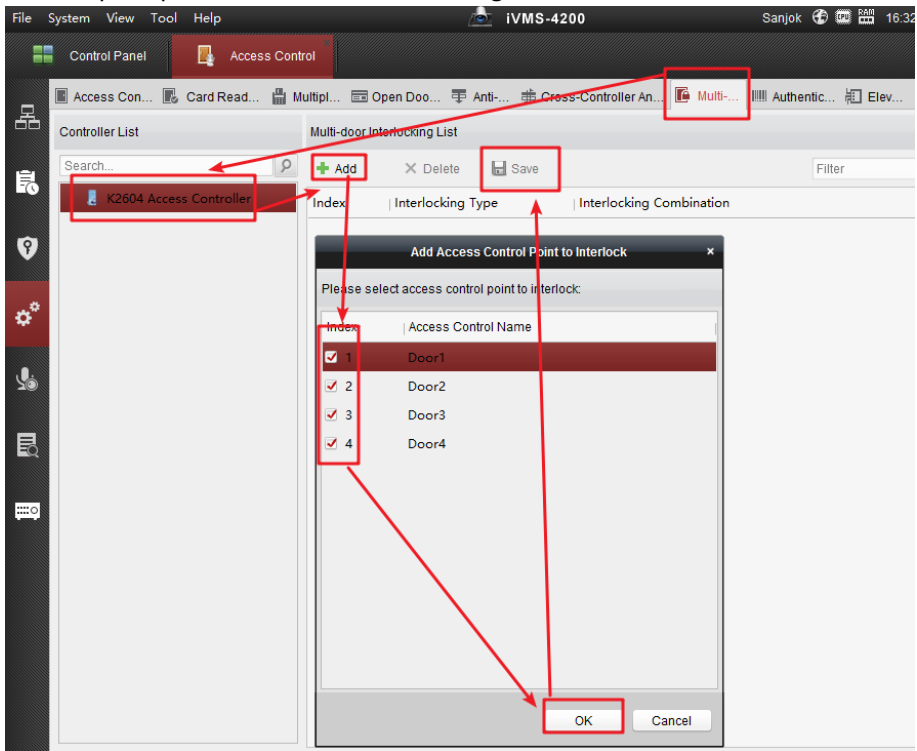
2. Operation Steps:

- 1) What is Interlock function

If several doors are added into interlock group, when you want to open one door, other doors and door magnetics must be close status, or you can't open the door.

- 2) Interlock configuration

In access control module, select Multi-door Interlocking, add interlocking group and save to device, and it will prompt save success in the downright corner.



- 3) Test(Take 4 doors for example)

When 4 doors are closed status, swipe card on reader1 or reader2 to open door1, then swipe card on reader3 or reader4 to open door2, now door2 will not open, then after close door1, we can open door2.

Suitable Models:

Model	
DS-K2601	Single Door Access Controller
DS-K2602	Two Door Access Controller
DS-K2604	Four Door Access Controller