

# 2ND GEN VALUE IP CAMERAS AND ACUSENSE NVRs:

Outstanding Value with Vast Form Factors, Enhanced Imaging, and AcuSense Motion Detection 2.0



## SIMPLE & EFFICIENT

Motion Detection 2.0 features our upgraded functionality to focus on human and vehicle events with instant alarms and handy search functions.



THE EASY  
UPGRADE TO AI



### FOCUSED

Concentrate on human and vehicle events



### SIMPLE-TO-USE

Motion detection 2.0 is ON by default, no need to configure on camera



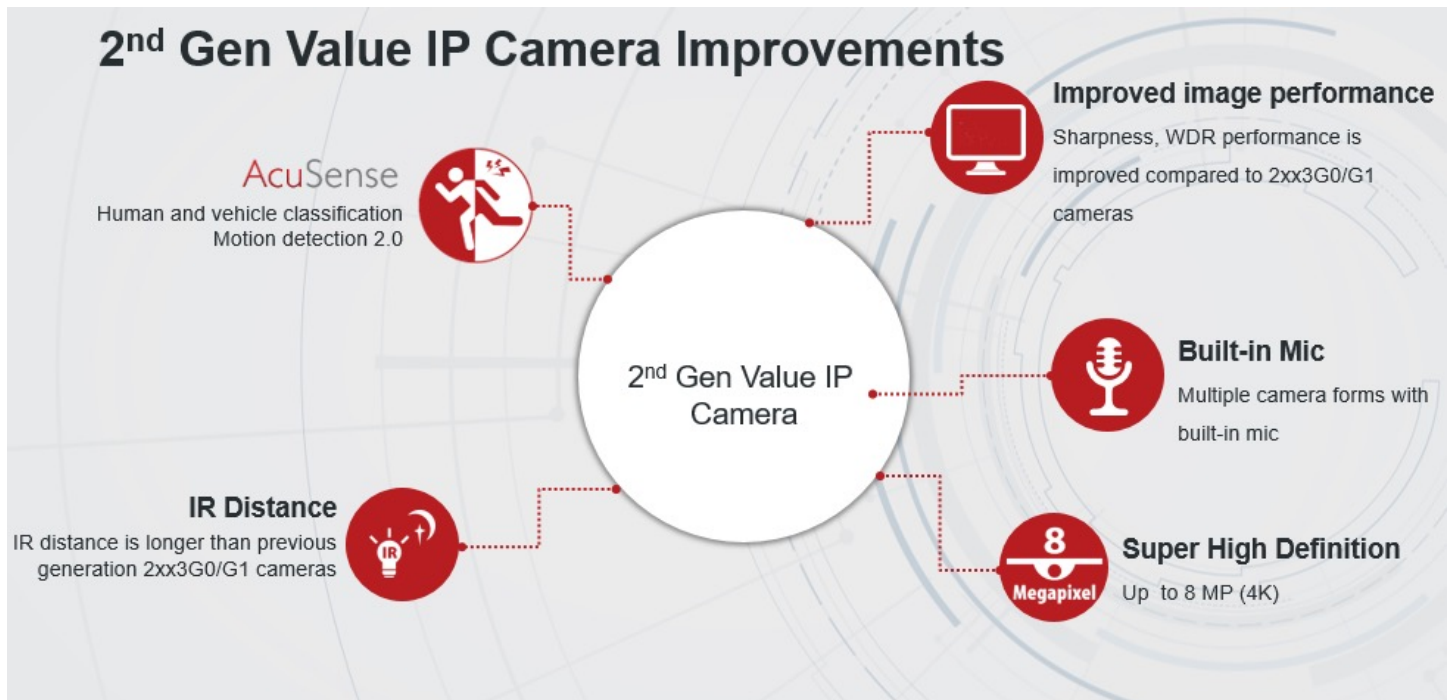
### EFFICIENT

Quick target searches for human and vehicle events

False alarms are a common industry problem since traditional motion detection is triggered by pixel changes in the video, costing end users time and money responding to unimportant events. Using budget-friendly security systems with advanced motion detection technology can reduce loss and optimize efficiency.

## The Solution: Hikvision's Leading AcuSense Technology

Hikvision's 2nd generation Value IP Cameras and AcuSense NVRs provide real-time threat detection that distinguishes people and vehicles from other targets, helping you focus on key events instead of responding to false alarms. The 2ndgen Value IP Camera delivers outstanding results by setting Motion Detection 2.0 to ON by default, saving users vast amount of time by eliminating the need to configure settings in the camera. The system allows you to perform target searches quickly and easily, enhancing efficiency for evidence retrieval.



## Better Imaging Performance

Compare with our Value IP G0/G1, the new Value IP G2 Cameras come with an f1.6 apertures, providing sharper details and better WDR performance.

DS-2CD2xx3G0-G1

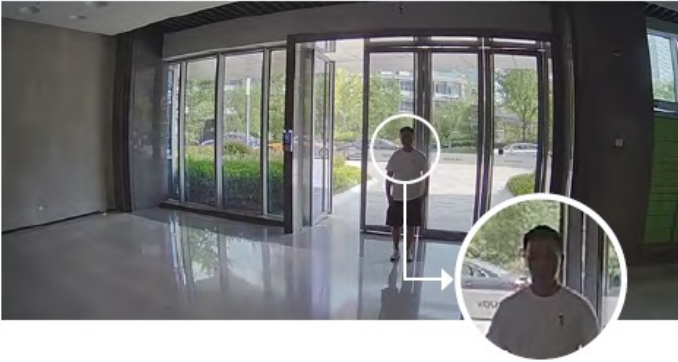


DS-2CD2xx3G0-G2





**DS-2CD2xx3G0-G1**



**DS-2CD2xx3G0-G2**



## Longer IR Range

Compared with our Value IP G0/G1 Cameras, the new Value IP G2 fixed Bullet Cameras and all form factor varifocal cameras come with a 32.8 ft. longer IR distance, providing sharper black and white video and images at a greater distance.



**DS-2CD2043G2-I (6mm)**  
Max IR distance: 132 ft. (40mm)



**DS-2CD2643G2-IZS (2.8 - 12 mm)**  
Max IR distance: 196 ft. (60mm)

## Motion Detection 2.0

Motion Detection 2.0 adds intelligence to conventional motion detection. Hikvision's AcuSense Technology 2.0 for precise human and vehicle identification retains the original motion detection agility while vastly improving its accuracy.

The color-coded target type can be tagged in video clips by the 2.0 version Camera. Video clips with human and vehicle targets in motion will be marked with different colors in NVR playback. The system helps you skip irrelevant video clips without targets of interest and reduce playback time to find the desired footage.



### FOCUSED

Concentrate on human and vehicle events



### EFFICIENT

Quick target searches for human and vehicle events



# 4K Ultra High Definition (UHD) Models Available

The Value IP G2 Camera Series features multiple 4K options, facilitating highly detailed image capture with UHD resolutions.



2MP



3MP



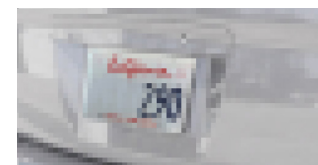
5MP



8MP



2MP



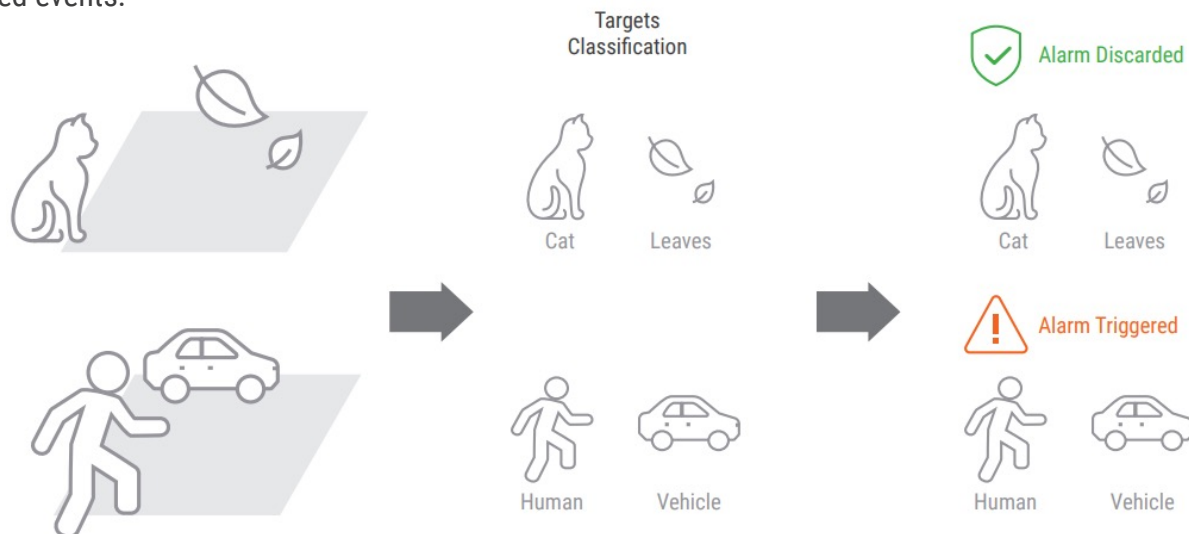
5MP



4K

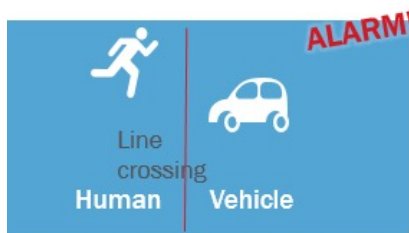
# VCA False Alarm Reduction on the AcuSense NVR

2nd Gen AcuSense NVRs come with the AcuSense 2.0 algorithm built in to support multiple video content analytics (VCAs) for human and vehicle classification to distinguish between humans, vehicles, and other objects. This reduces false alarms up to 90%, saving you time and effort by delivering more accurate alarm notifications on focused events.



Intrusion Detection for Human and/or Vehicle Only





Accurate alarms



False alarms

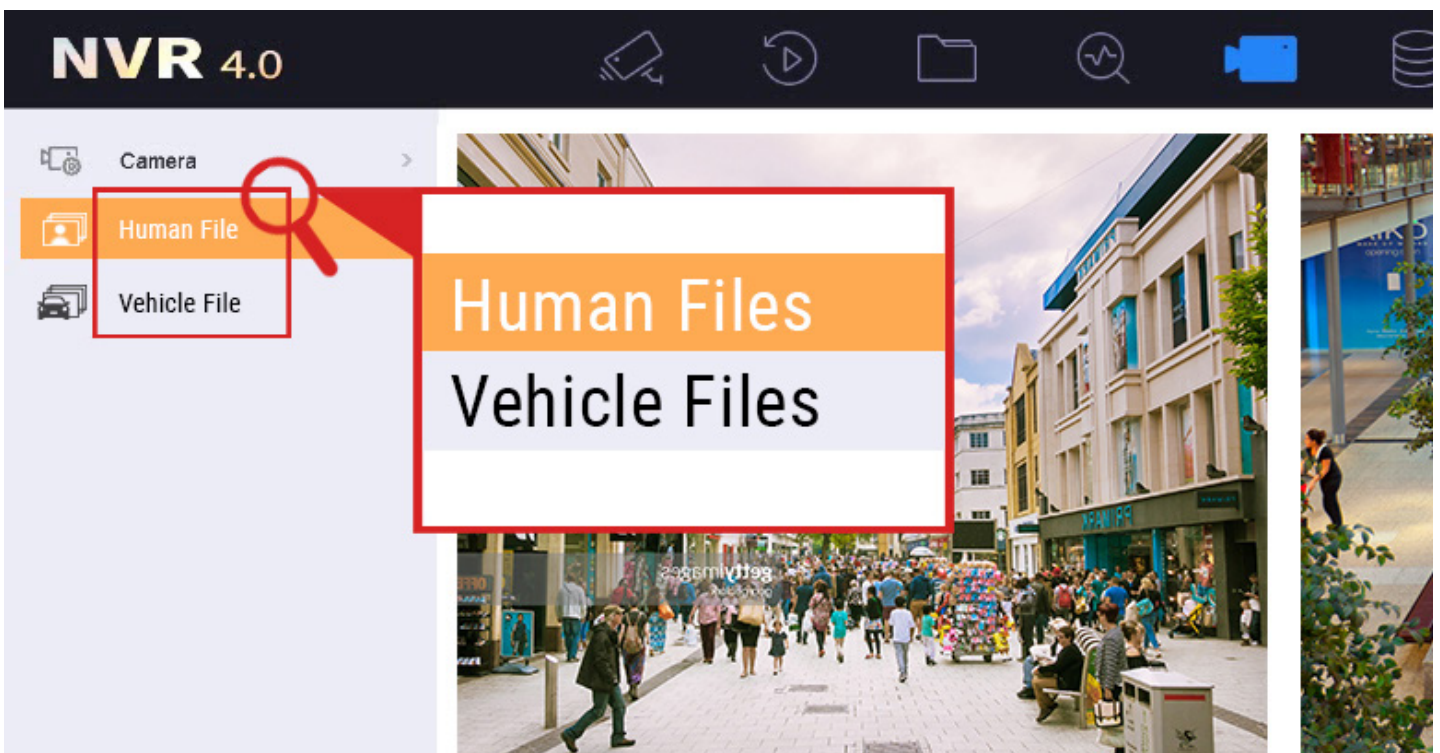


### Line Cross Detection for Human and/or Vehicle Only

## Quick Target Search

The AcuSense system allows users to playback event video triggered by only human or vehicle targets. Consider this scenario: A suitcase was stolen from a car in a parking lot. No one knows the exact time of the crime and normally the security guard has to play back long sections of video to find the suspect. With AcuSense, the guard spends significantly less time watching video, and instead can quickly find and review footage of the event that contains and is triggered by only humans and vehicles.

*\*Note: Value IP G2 Cameras support the Quick Target Search function and do not require an AcuSense NVR. The Q or I series NVR can also support this function.*



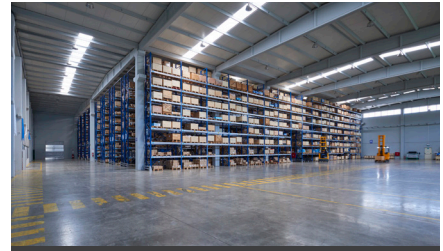
# Applications



Retail/Coffee Shops



Office Buildings



Warehouses



Residential







Parking Lots

## 2nd Gen Value IP Cameras Product Showcase

<p>DS-2CD2023G2-IU (2 MP) DS-2CD2043G2-IU (4 MP) DS-2CD2083G2-IU (8 MP)</p> 		<p>Fixed Bullet 2nd gen Value IP Network AcuSense Camera</p>	<ul style="list-style-type: none"> <li>• 0.005 lux @ f1.6</li> <li>• 2.8 or 4 mm fixed lens</li> <li>• Human/vehicle classification</li> <li>• H.265+/H.265</li> <li>• IP67</li> <li>• 120 dB WDR</li> <li>• Built-in Mic</li> </ul>
<p>DS-2CD2123G2-IU (2 MP) DS-2CD2143G2-IU (4 MP) DS-2CD2183G2-IU (8 MP)</p> 		<p>Fixed Dome 2nd Gen Value IP Network AcuSense Camera</p>	<ul style="list-style-type: none"> <li>• 0.005 lux @ f1.6</li> <li>• 2.8 or 4 mm fixed lens</li> <li>• Human/vehicle classification</li> <li>• H.265+/H.265</li> <li>• IP67, IK10</li> <li>• 120 dB WDR</li> <li>• Built-in Mic</li> </ul>
<p>DS-2CD2323G2-IU (2 MP) DS-2CD2343G2-IU (4 MP) DS-2CD2383G2-IU (8 MP)</p> 		<p>Fixed Turret 2nd Gen Value IP Network AcuSense Camera</p>	<ul style="list-style-type: none"> <li>• 0.005 lux @ f1.6</li> <li>• 2.8 or 4 mm fixed lens</li> <li>• Human/vehicle classification</li> <li>• H.265+/H.265</li> <li>• IP67</li> <li>• 120 dB WDR</li> <li>• Built-in Mic</li> </ul>
<p>DS-2CD2523G2-IS (2 MP) DS-2CD2543G2-I(W)S (4 MP) DS-2CD2583G2-IS (8 MP)</p> 		<p>Fixed Compact Dome 2nd Gen Value IP Network AcuSense Camera</p>	<ul style="list-style-type: none"> <li>• 0.005 lux @ f1.6</li> <li>• 2.8 or 4 mm fixed lens</li> <li>• Human/vehicle classification</li> <li>• H.265+/H.265</li> <li>• IP67, IK08</li> <li>• 120 dB WDR</li> <li>• Audio and alarm interface</li> </ul>

<p><b>DS-2CD2E43G2-U (4 MP)</b></p> 		<p>Fixed Ceiling Mount 2nd Gen Value IP Network AcuSense Camera</p>	<ul style="list-style-type: none"> <li>• 0.005 lux @ f1.6</li> <li>• 2.8 or 4 mm fixed lens</li> <li>• Human/vehicle classification</li> <li>• H.265+/H.265</li> <li>• IP67</li> <li>• 120 dB WDR</li> <li>• Built-in Mic</li> </ul>
<p><b>DS-2CS2623G2-IZS (2 MP)</b> <b>DS-2CS2643G2-IZS (4 MP)</b> <b>DS-2CS2683G2-IZS (8 MP)</b></p> 		<p>Varifocal Bullet 2nd Gen Value IP Network AcuSense Camera</p>	<ul style="list-style-type: none"> <li>• 0.005 lux @ f1.6</li> <li>• 2.8 to 12 mm motorized lens</li> <li>• Human/vehicle classification</li> <li>• H.265+/H.265</li> <li>• IP67, IK10</li> <li>• 120 dB WDR</li> <li>• Audio and alarm interface</li> </ul>
<p><b>DS-2CD2723G2-IZS (2 MP)</b> <b>DS-2CD2743G2-IZS (4 MP)</b> <b>DS-2CD2783G2-IZS (8 MP)</b></p> 		<p>Varifocal Dome 2nd Gen Value IP Network AcuSense Camera</p>	<ul style="list-style-type: none"> <li>• 0.005 lux @ f1.6</li> <li>• 2.8 to 12 mm motorized lens</li> <li>• Human/vehicle classification</li> <li>• H.265+/H.265</li> <li>• IP67, IK10</li> <li>• 120 dB WDR</li> <li>• Audio and alarm interface</li> </ul>
<p><b>DS-2CD2H43G2-IZS (4 MP)</b> <b>DS-2CD2H83G2-IZS (8 MP)</b></p> 		<p>Varifocal Turret 2nd Gen Value IP Network AcuSense Camera</p>	<ul style="list-style-type: none"> <li>• 0.005 lux @ f1.6</li> <li>• 2.8 to 12 mm motorized lens</li> <li>• Human/vehicle classification</li> <li>• H.265+/H.265</li> <li>• IP67, IK10</li> <li>• 120 dB WDR</li> <li>• Audio and alarm interface</li> </ul>

## 2nd Gen AcuSense NVR Product Showcase

<p><b>DS-76xxNXI-I2/xP/S</b></p> 		<p>2nd Gen AcuSense NVR 8-ch/16-ch with 2HDDs Bay</p>	<ul style="list-style-type: none"> <li>• Up to 12 MP live view, storage and playback</li> <li>• Up to 8-ch/16-ch IP camera inputs</li> <li>• H.265+/H.265/H.264+/H.264 video formats</li> <li>• Up to 4-ch human and vehicle target classification</li> <li>• Up to 16-ch 1080p decoding capability</li> </ul>
<p><b>DS-77xxNXI-I4/xP/S</b></p> 		<p>2nd Gen AcuSense NVR 16-ch/32-ch with 4 HDDs Bay</p>	<ul style="list-style-type: none"> <li>• Up to 12 MP live view, storage, and playback</li> <li>• Up to 16-ch/32-ch IP camera inputs</li> <li>• H.265+/H.265/H.264+/H.264 video formats</li> <li>• Up to 4-ch human and vehicle target classification</li> <li>• Up to 16-ch 1080p decoding capability</li> </ul>



For more information please scan the QR Code